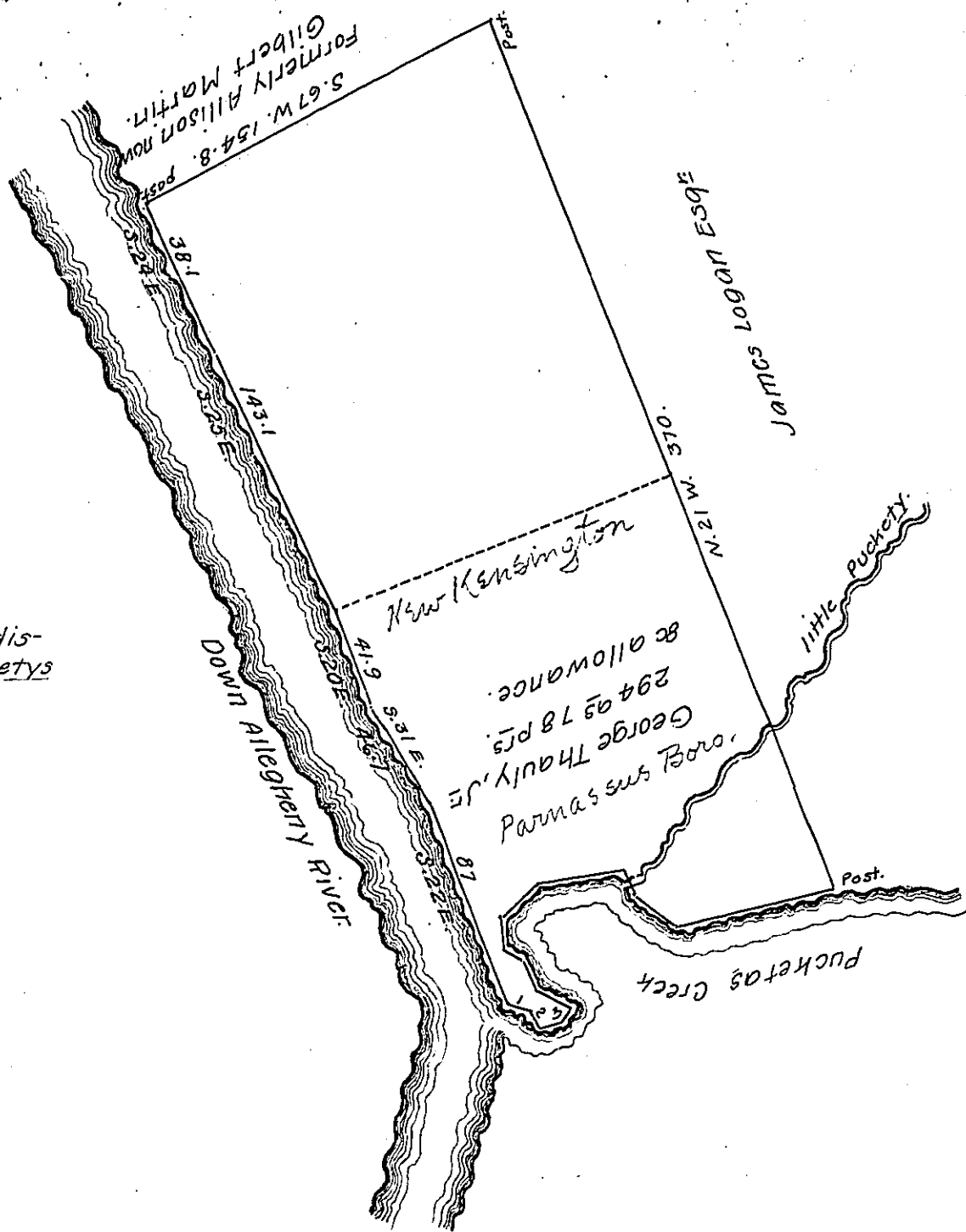


FORM NO 1.



Courses and distances up Pucketys Creek.

- S. 69. E 9.
- S. 25. E 8
- N. 74. E 7.3
- N. 50. E 4.4.
- N. 54. W. 15.
- N. 22. W. 14.5
- N. 64. W. 9.5
- N. 2. W. 15.2
- N. 54. E 18.6
- N. 85. E 33.9
- S. 25. E 13.2
- S. 46. E 19.
- N. 77. E. 66.

In pursuance of an Application granted to George Thauly Jr. N^o 1822 dated 3rd of April 1769 Surveyed on the 15th of August 1828 the above described tract of land Containing two hundred and ninety four acres and Seventy eight perches and the allowance proportioned at Six per Cent. for roads &c. Situate on the Allegheny river at and above the mouth of Pucketys Creek including said creek and bottom in Allegheny Township Westmoreland County Penn.

J. L. Carpenter, D.S.

Gabriel Hiester Esq^r,
Surveyor General, Pen. }

N.B. The above described tract of land was surveyed and patented upon an Application date not known the above right was contested in a court of law but failed J.L.C.

IN TESTIMONY that the above is a copy of the original remaining on file in the Department of Internal Affairs of Pennsylvania, made conformably to an Act of Assembly approved the 16th day of February, 1833, I have hereunto set my Hand and caused the Seal of said Department to be affixed at Harrisburg, this twenty third day of November, 1908.

Henry Horvath
Secretary of Internal Affairs.